

## **Appendix A.**

### **Finding Charts for Possible Nearby Stars**

Finding charts for all possible nearby stars in the subsample discussed in Chapter 4 were prepared for CTIOPI use. For many of the stars from the Luyten-Palomar Survey (LP), finding charts are not easily available in the literature and those are presented here. For the other stars, references are provided to sources of available charts.

#### 1. FINDING CHARTS FOR LUYTEN HALF SECOND STARS

LHS1363	LHS 5226
LHS5094	LHS 2880
LHS 2024	LHS 3056
LHS 6167	LHS 2783
LHS 2397a	

Finding charts are available in Luyten, W. J. & Albers, H. 1979, *An Atlas of Identification Charts for LHS Stars* (Minneapolis: University of Minnesota)

#### 2. FINDING CHARTS FOR TWO MICRON ALL SKY SURVEY STARS

2MA 0251-0352 (02511490-0352459)
2MA 0429-3123 (04291842-3123568)
2MA 0517-3349 (05173766-3349027)
2MA 0921-2104 (09211410-2104446)
2MA 1155-3727 (11553952-3727350)
2MA 1507-2000 (15072779-2000431)

2MA 1534-1418 (15345704-1418486)

2MA 2306-0502 (23062928-0502285)

2MA 2351-2537 (23515044-2537367)

Finding charts may be prepared from the on-line version of the Two Micron All Sky Survey All-Sky Data Release (Skrutskie, M. F. *et al.* 2006, "The Two Micron All Sky Survey (2MASS)," *Astron. J.*, 131, 1163 (2MASS))

<http://www.ipac.caltech.edu/2mass/releases/allsky/>.

### 3. FINDING CHARTS FOR "GICLAS" STARS

G 75-35

G 161-71

Finding charts for these two stars are available in

Giclas, H. L., Burnham, R., & Thomas, N. G. 1961, "Lowell proper motions III," *Lowell Obs. Bull.*, 5, 61 for G 75-35

Giclas, H. L., Burnham, R., & Thomas, N. G. 1961, "Lowell proper motions VI," *Lowell Obs. Bull.*, 6, 135 for G 161-71

### 4. FINDING CHARTS FOR CALÁN-EUROPEAN SOUTHERN OBSERVATORY PROPER MOTION STARS

CE 303

A finding chart is for this star is available in

Ruiz, M. T., Wischnjewsky, M. Rojo, P. M., & Gonzalez, L. E. 2001, "Calán-ESO Proper-Motion Catalog," *Astrophys. J. Suppl. Ser.*, 133, 119

## 5. FINDING CHARTS FOR LUYTEN-PALOMAR SURVEY STARS

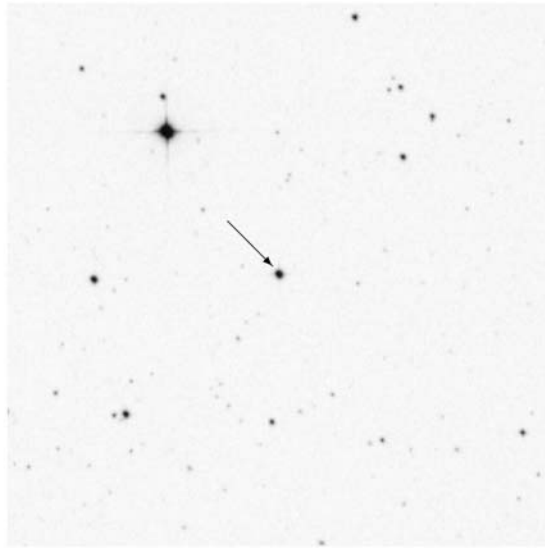
On the following pages, there are finding charts for these twenty-two stars from the Luyten-Palomar Survey:

LP 991-84 (Figure A-1)	LP 615-149 (Figure A-12)
LP 888-18 (Figure A-2)	LP 739-2 (Figure A-13)
LP 889-37 (Figure A-3)	LP 869-19 (Figure A-14)
LP 834-32 (Figure A-4)	LP 869-26 (Figure A-15)
LP 655-43 (Figure A-5)	LP 870-65 (Figure A-16)
LP 716-10 (Figure A-6)	LP 756-3 (Figure A-17)
LP 776-25 (Figure A-7)	LP 984-92 (Figure A-18)
LP 717-36 (Figure A-8)	LP 876-10 (Figure A-19)
LP 671-8 (Figure A-9)	LP 932-83 (Figure A-20)
LP 731-76 (Figure A-10)	LP 822-101 (Figure A-21)
LP 734-34 (Figure A-11)	LP 704-15 (Figure A-22)

Figures A-1 through 24 are finding charts for these stars based on red Second Generation Digital Sky Survey (McLean, B. J., Greene, G. R., Lattanzi, M. G., & Pirene, B. 2000, in ASP Conf. Proc. 216, *Astronomical Data Analysis Software and Systems IX*, ed. N. Manset, C. Veillet, & D. Crabtree (San Francisco: ASP), 145) provided by *SkyView* (McGlynn, T., Scollick, K., & White, N., 1996 in IAU Symp. 179, *New Horizons from Multi-Wavelength Sky Surveys*, ed. B. J. McLean *et al.* (Boston: Kluwer Academic Publishers), 465).

01:39:21.7 - 39:36:08

N  
E  
10'×10'

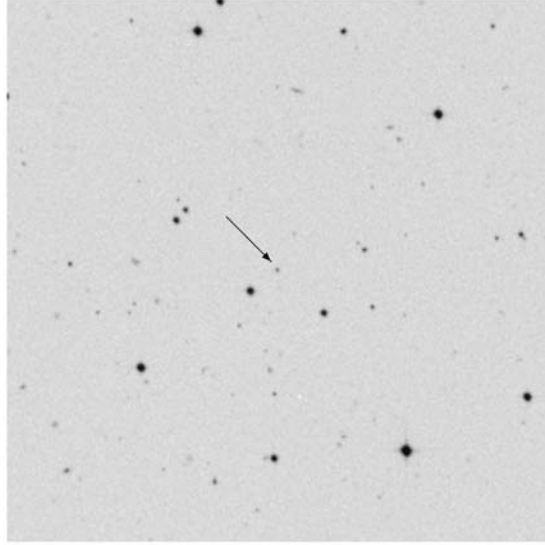


LP991-084

FIG. A-1.—LP 991-084 Finding Chart. Annotations by R. J. Patterson, J. L. Bartlett, & J. L. Bartlett. Image © Anglo-Australian Observatory Board.

03:31:30.2 - 30:42:38

N  
E  
10'×10'

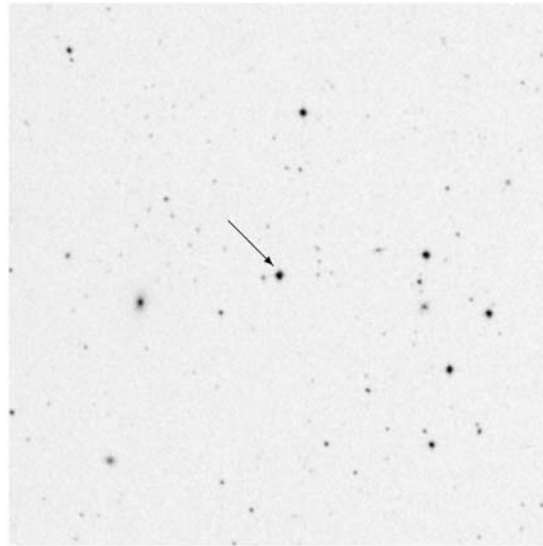


LP888-018

FIG. A-2.—LP 888-018 Finding Chart. Annotations by R. J. Patterson, J. L. Bartlett, & J. L. Bartlett. Image © Anglo-Australian Observatory Board.

04:08:55.5 - 31:28:53

N  
E  
10' × 10'

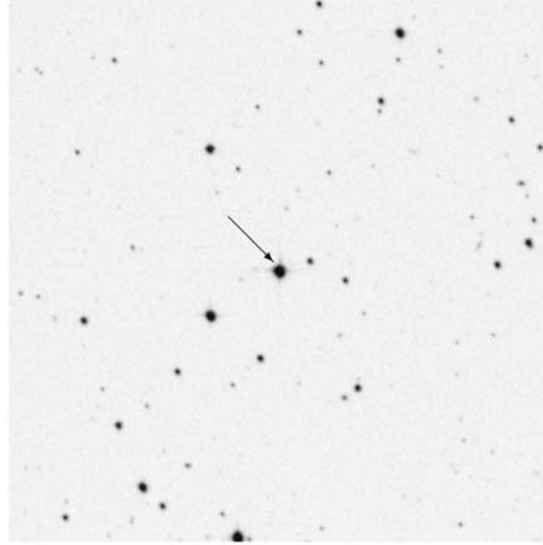


LP889-037

FIG. A-3.— LP 889-037 Finding Chart.  
Annotations by R. J. Patterson, J. L. Bartlett,  
& J. L. Bartlett. Image © Anglo-Australian  
Observatory Board.

04:35:36.1 - 25:27:34

N  
E  
10' × 10'

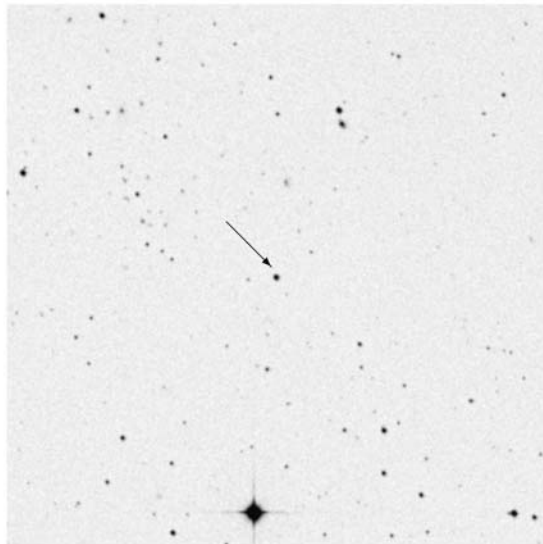


LP834-032

FIG. A-4.— LP 834-032 Finding Chart.  
Annotations by R. J. Patterson, J. L. Bartlett,  
& J. L. Bartlett. Image © Anglo-Australian  
Observatory Board.

04:52:04.01 - 10:58:21.87

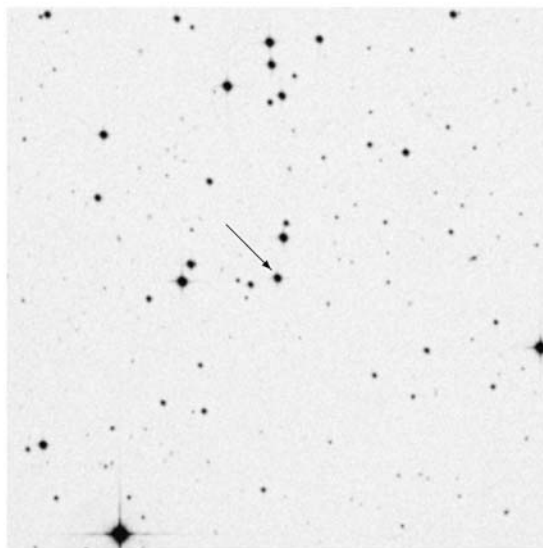
N  
10' × 10'  
E



LP716-010

04:38:02.5 - 05:56:13

N  
10' × 10'  
E



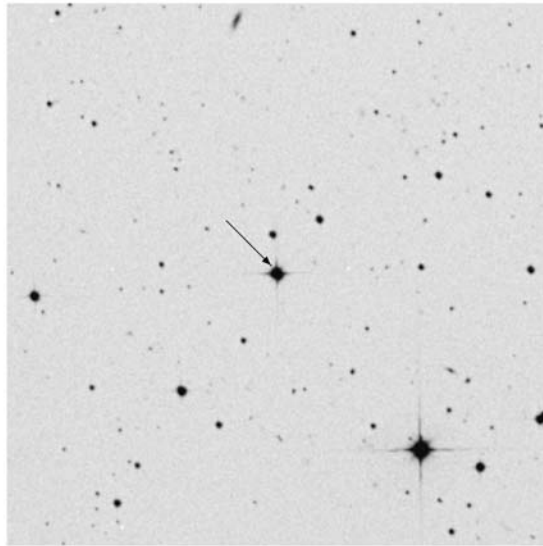
LP655-043

FIG. A-6.—LP 716-010 Finding Chart.  
Annotations by R. J. Paterson, J. L. Bartlett,  
& J. L. Bartlett. Image © Anglo-Australian  
Observatory Board.

FIG. A-5.—LP 655-043 Finding Chart.  
Annotations by R. J. Paterson, J. L. Bartlett,  
& J. L. Bartlett. Image © Anglo-Australian  
Observatory Board.

04:52:24.4 -16:49:21

N  
E  
10'×10'

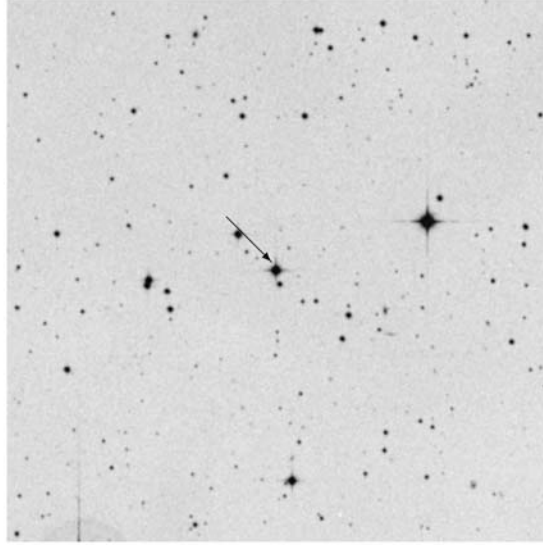


LP776-025

FIG. A-7.—LP 776-025 Finding Chart. Annotations by R. J. Patterson, J. L. Bartlett, & J. L. Bartlett. Image © Anglo-Australian Observatory Board.

05:25:41.6 -09:09:12

N  
E  
10'×10'

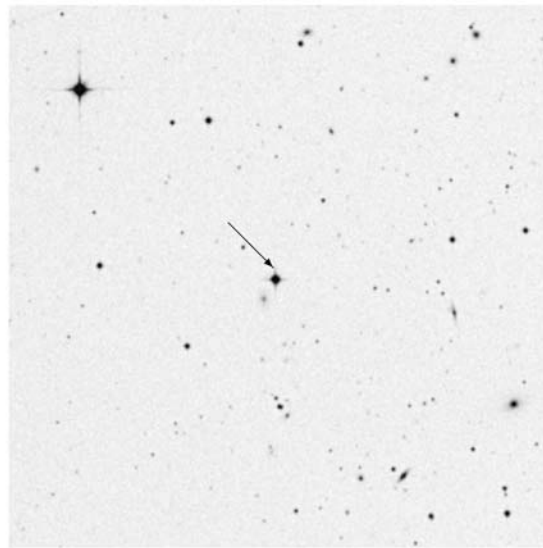


LP717-036

FIG. A-8.—LP 717-036 Finding Chart. Annotations by R. J. Patterson, J. L. Bartlett, & J. L. Bartlett. Image © Anglo-Australian Observatory Board.

10:54:41.9 -07:18:32

N  
E  
10'×10'

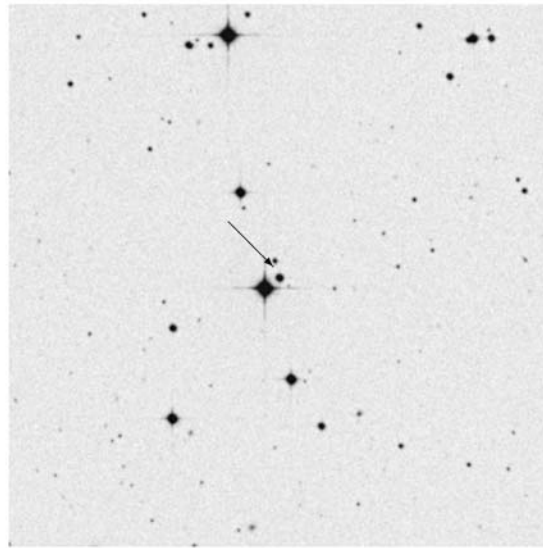


LP671-008

FIG. A-9—LP 671-008 Finding Chart. Annotations by R. J. Patterson, J. L. Bartlett, & J. L. Bartlett. Image © Anglo-Australian Observatory Board.

10:58:27.9 -10:46:30

N  
E  
10'×10'



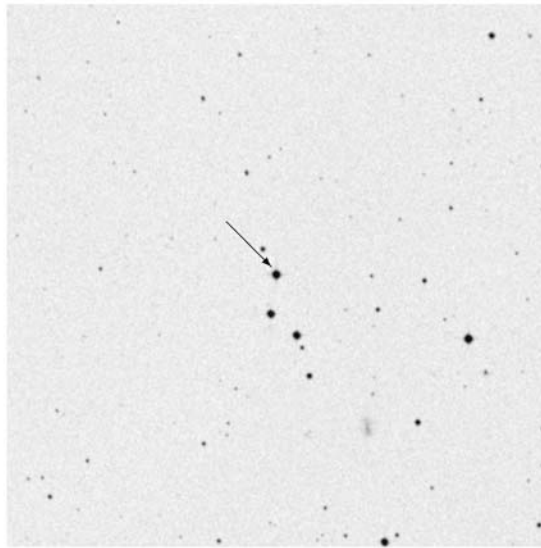
LP731-076

FIG. A-10.—LP 731-076 Finding Chart. BD-10°3166 is the very bright star immediately to the northeast of LP 731-076; they are a possible common proper motion pair. Annotations by R. J. Patterson, J. L. Bartlett, & J. L. Bartlett. Image © Anglo-Australian Observatory Board.



12:10:28.3 -13:10:23

N  
10'×10'  
E

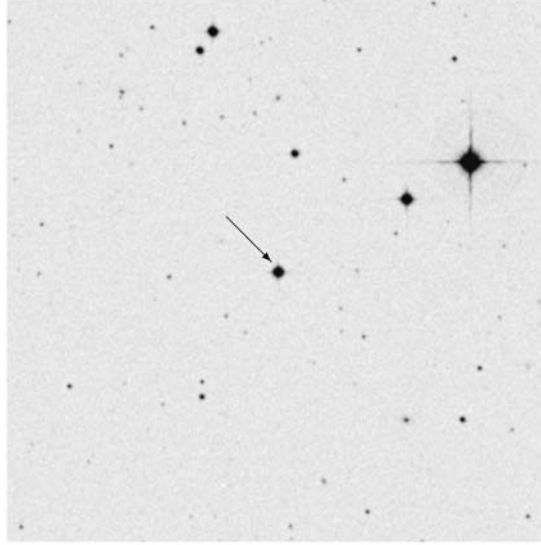


LP734-034

FIG. A-11 — LP 734-034 Finding Chart. Annotations by R. J. Patterson, J. L. Bartlett, & J. L. Bartlett. Image © Anglo-Australian Observatory Board.

12:27:44.7 -03:15:00

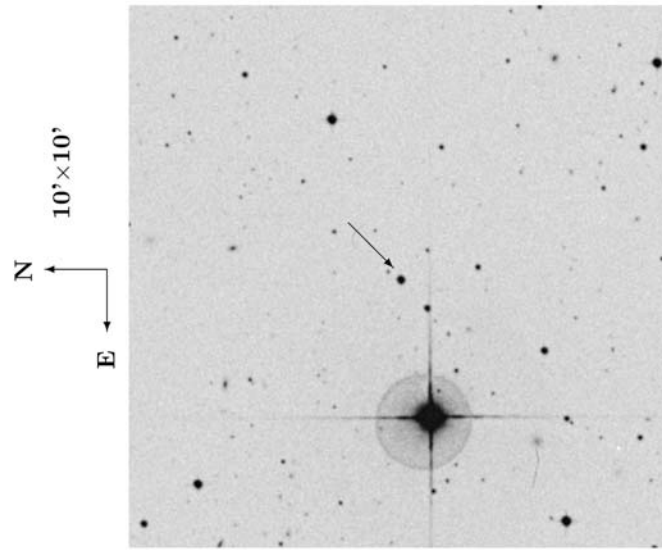
N  
10'×10'  
E



LP615-149

FIG. A-12.— LP 615-149 Finding Chart. Annotations by R. J. Patterson, J. L. Bartlett, & J. L. Bartlett. Image © Anglo-Australian Observatory Board.

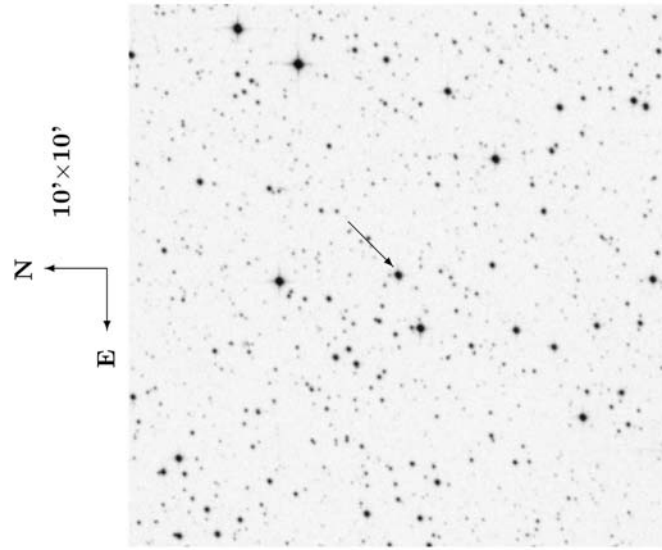
13:58:16.1 - 12:02:58



LP739-002

FIG. A-13 — LP 739-002 Finding Chart. Annotations by R. J. Patterson, J. L. Bartlett, & J. L. Bartlett. Image © Anglo-Australian Observatory Board.

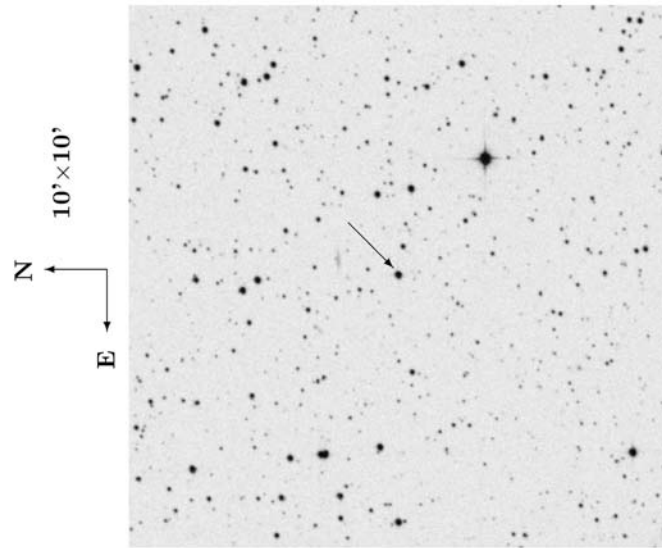
19:42:00.6 - 21:04:05



LP869-019

FIG. A-14.— LP 869-019 Finding Chart. Annotations by R. J. Patterson, J. L. Bartlett, & J. L. Bartlett. Image © Anglo-Australian Observatory Board.

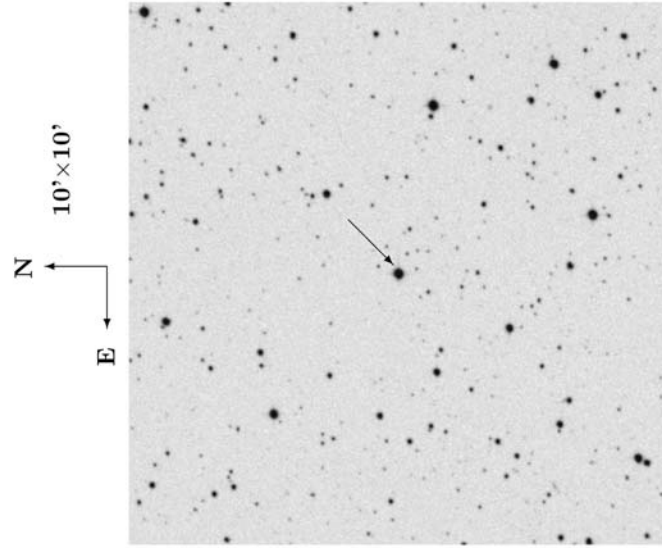
19:44:53.7 -23:37:59



LP869-026

FIG. A-15.—LP 869-026 Finding Chart. CTIOPI resolved LP 869-026 into two components as shown in Figure 4.6. Annotations by R. J. Patterson, J. L. Bartlett, & J. L. Bartlett. Image © Anglo-Australian Observatory Board.

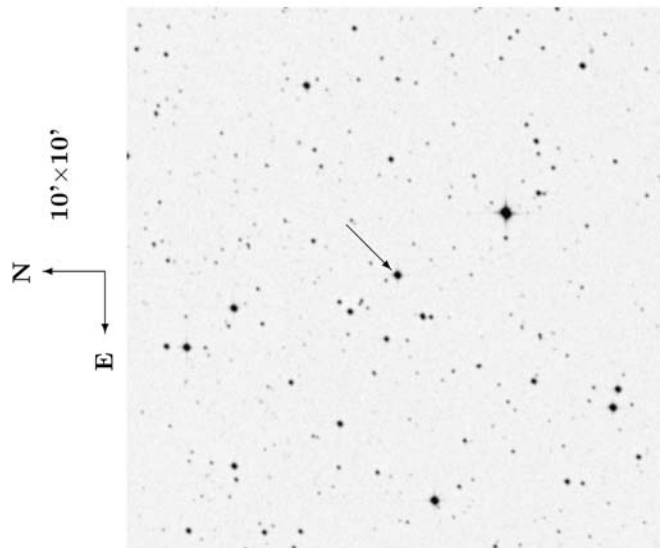
20:04:30.7 -23:42:01



LP870-065

FIG. A-16.—LP 870-065 Finding Chart. Annotations by R. J. Patterson, J. L. Bartlett, & J. L. Bartlett. Image © Anglo-Australian Observatory Board.

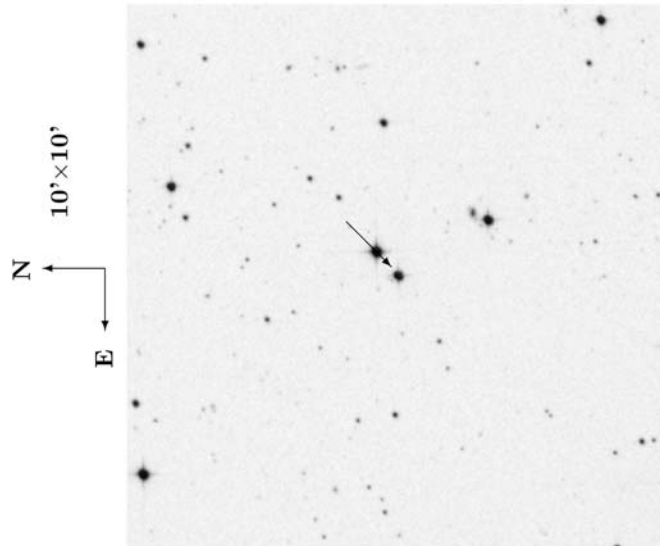
20:46:43.6 -11:48:13



LP756-003

FIG. A-17.— LP 756-003 Finding Chart. Annotations by R. J. Patterson, J. L. Bartlett, & J. L. Bartlett. Image © Anglo-Australian Observatory Board.

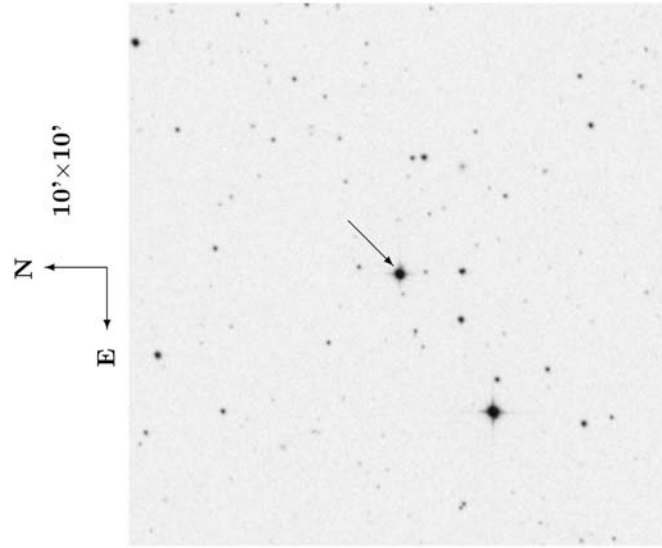
22:45:00.0 -33:15:25



LP984-092

FIG. A-18 — LP 984-092 Finding Chart. LP 984-091 is the brighter star to the northwest of LP 984-092; they are a possible common proper motion pair. Annotations by R. J. Patterson, J. L. Bartlett, & J. L. Bartlett. Image © Anglo-Australian Observatory Board.

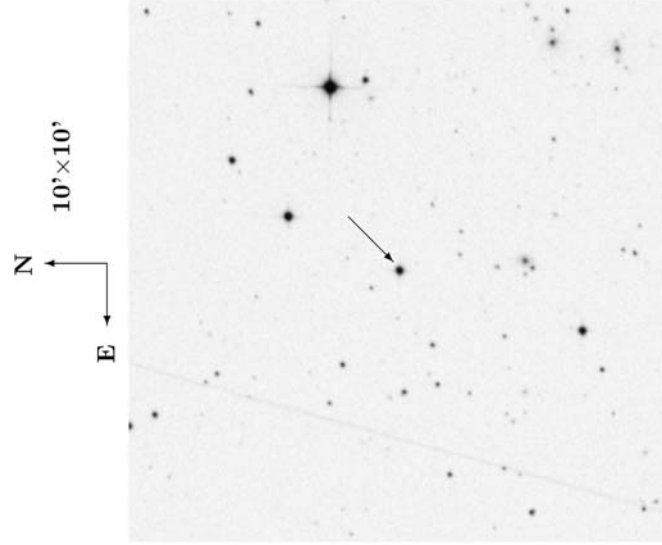
22:48:04.4 -24:22:07



LP876-010

FIG. A-19.— LP 876-010 Finding Chart. Annotations by R. J. Patterson, J. L. Bartlett, & J. L. Bartlett. Image © Anglo-Australian Observatory Board.

22:49:08.4 -28:51:19

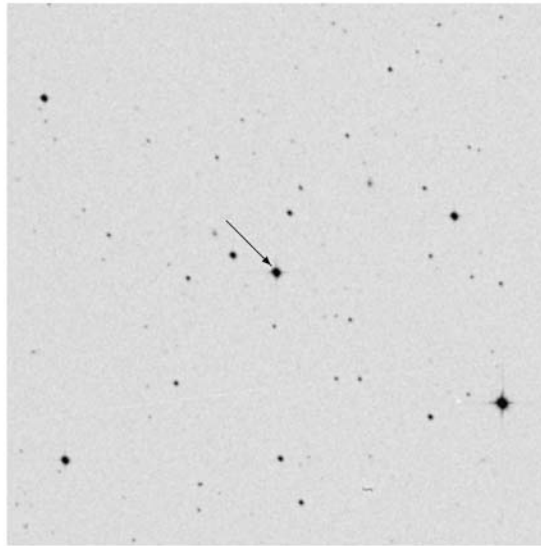


LP932-083

FIG. A-20.— LP 932-083 Finding Chart. LTT 9210 is the very bright star to the northwest of LP 932-083; they are a possible common proper motion pair. Annotations by R. J. Patterson, J. L. Bartlett, & J. L. Bartlett. Image © Anglo-Australian Observatory Board.

23:31:25.0 -16:15:57

N  
E  
10'×10'

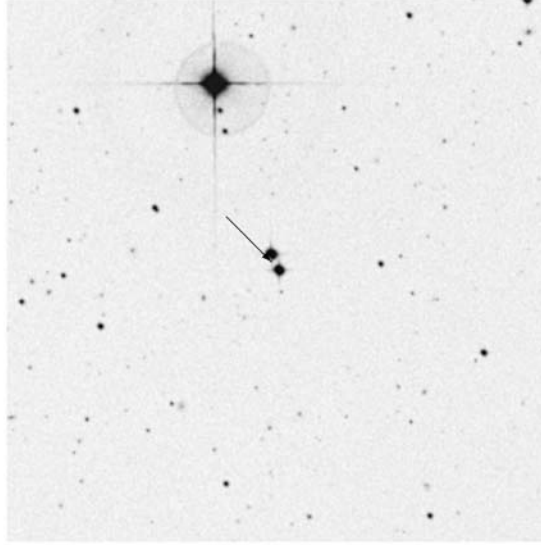


LP822-101

FIG. A-21—LP 822-101 Finding Chart. Annotations by R. J. Patterson, J. L. Bartlett, & J. L. Bartlett. Image © Anglo-Australian Observatory Board.

23:57:20.5 -12:58:48

N  
E  
10'×10'



LP704-015

FIG. A-22 — LP 704-015 Finding Chart. LP 704-016 is the star of comparable brightness just to the northwest of LP 704-015; they are a potential common proper motion pair. Annotations by R. J. Patterson, J. L. Bartlett, & J. L. Bartlett. Image © Anglo-Australian Observatory Board.